

# CITY OF BURLINGTON

ORDINANCE  
Planning Department, \_\_\_\_\_

Sponsor: \_\_\_\_\_  
Planning Commission, Councilors Mason, Bushor, Paul: Ordinance Com. \_\_\_\_\_

In the Year Two Thousand \_\_\_\_\_  
Thirteen \_\_\_\_\_

Public Hearing Dates \_\_\_\_\_

First reading: \_\_\_\_\_

Referred to: \_\_\_\_\_

Rules suspended and placed in all  
stages of passage: \_\_\_\_\_

Second reading: \_\_\_\_\_

Action: \_\_\_\_\_

Date: \_\_\_\_\_

Signed by Mayor: \_\_\_\_\_

Published: \_\_\_\_\_

Effective: \_\_\_\_\_

## An Ordinance in Relation to

COMPREHENSIVE DEVELOPMENT ORDINANCE—  
Downtown Transition District Expansion  
ZA 14-04

**It is hereby Ordained** by the City Council of the City of Burlington, as follows:

That Appendix A, Comprehensive Development Ordinance, of the Code of Ordinances of the City of Burlington be and hereby is amended by amending Map 4.3.1-1, Base Zoning Districts, 4.4.1-1 Mixed Use Downtown Districts, 4.4.5-1 Residential Zoning Districts, 4.4.1-3 Side Street Building Height Setback and 8.1.3-1 Parking Districts to expand the Downtown Transition District boundary along the west side of South Champlain Street by straightening the boundary line and bringing the district boundary to the South Champlain Street street frontage, thereby changing the zoning district for 151 and 157-159 South Champlain Street (Parcel ID numbers 049-1-005-000 and 049-1-004-000 respectively) from Residential High Density to Downtown Transition.

See attached Map excerpts for changes.

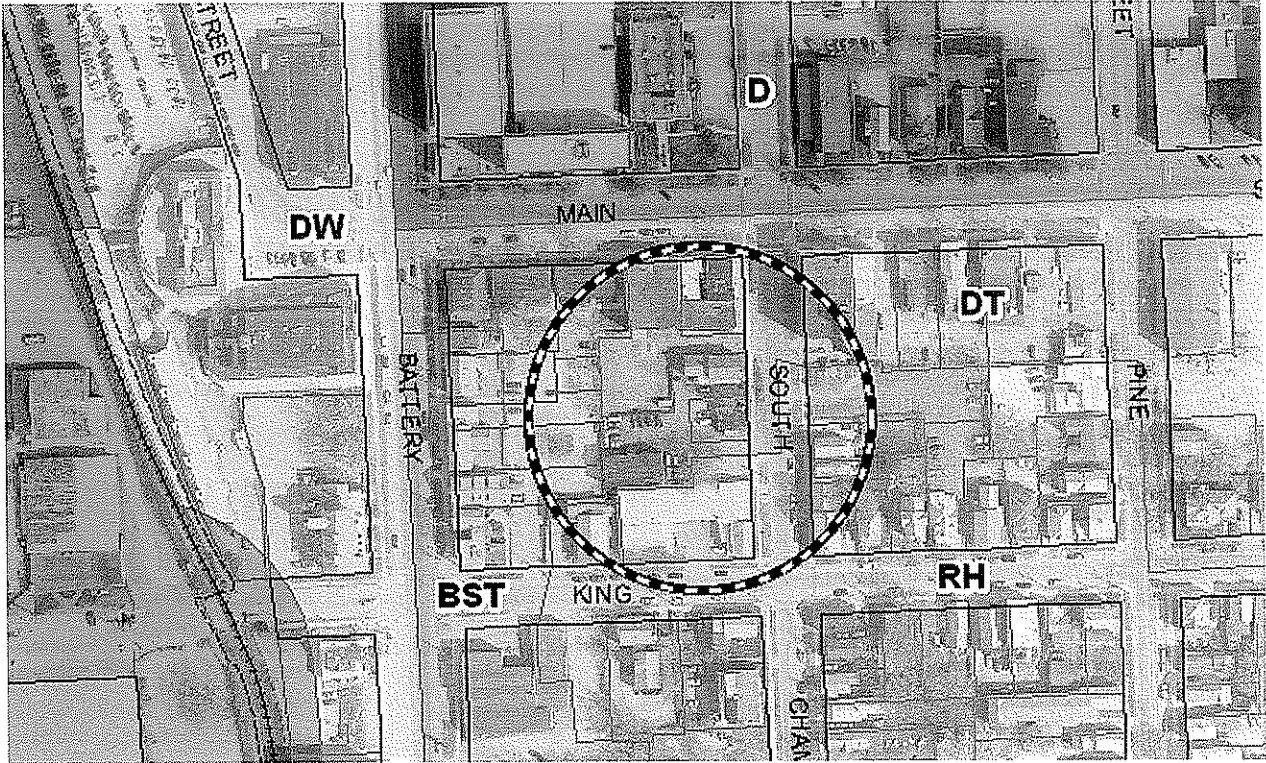
Balance of Maps 4.3.1-1, Base Zoning Districts, 4.4.1-1 Mixed Use Downtown Districts, 4.4.5-1 Residential Zoning Districts, 4.4.1-3 Side Street Building Height Setback and 8.1.3-1 Parking Districts As written.

\* Material stricken out deleted.

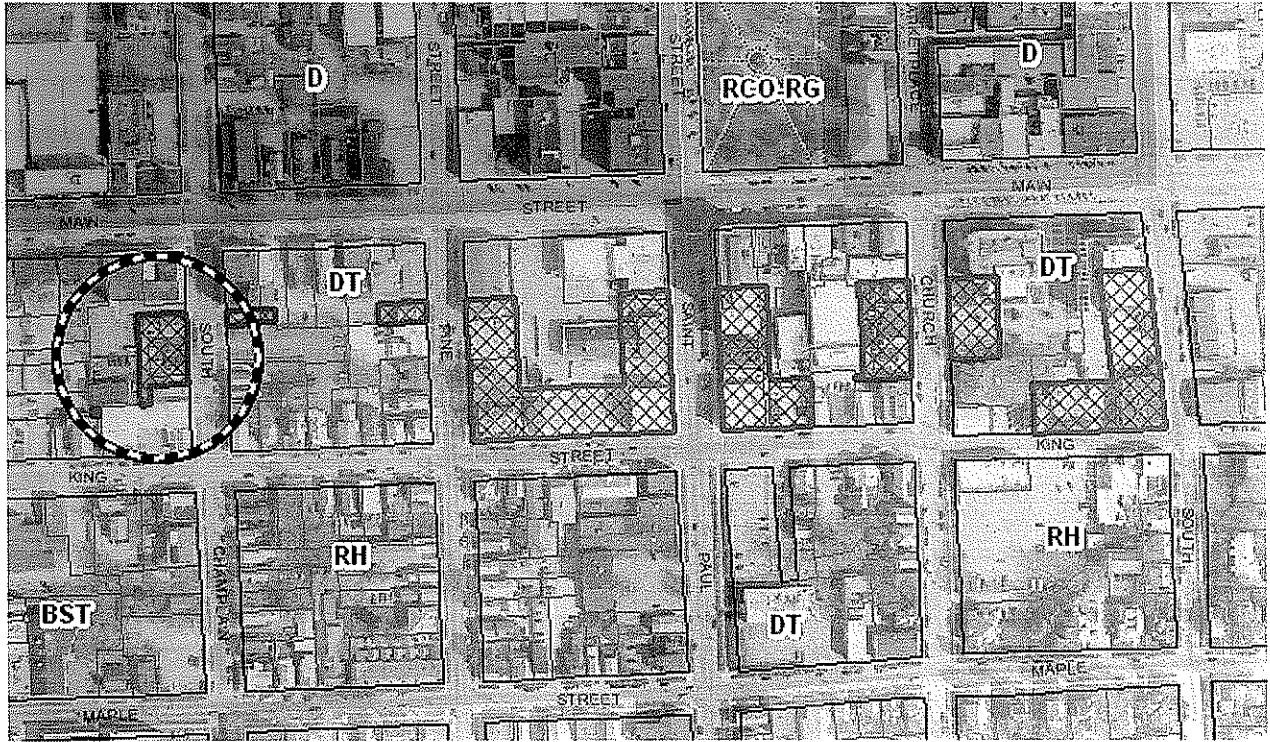
\*\* Material underlined added.

## Maps to be amended

- 4.3.1-1 Base Zoning Districts
- 4.4.1-1 Mixed Use Downtown Districts
- 4.4.5-1 Residential Zoning Districts



#### 4.4.1-3 Side Street Building Height Setback



#### 8.1.3-1 Parking Districts

