

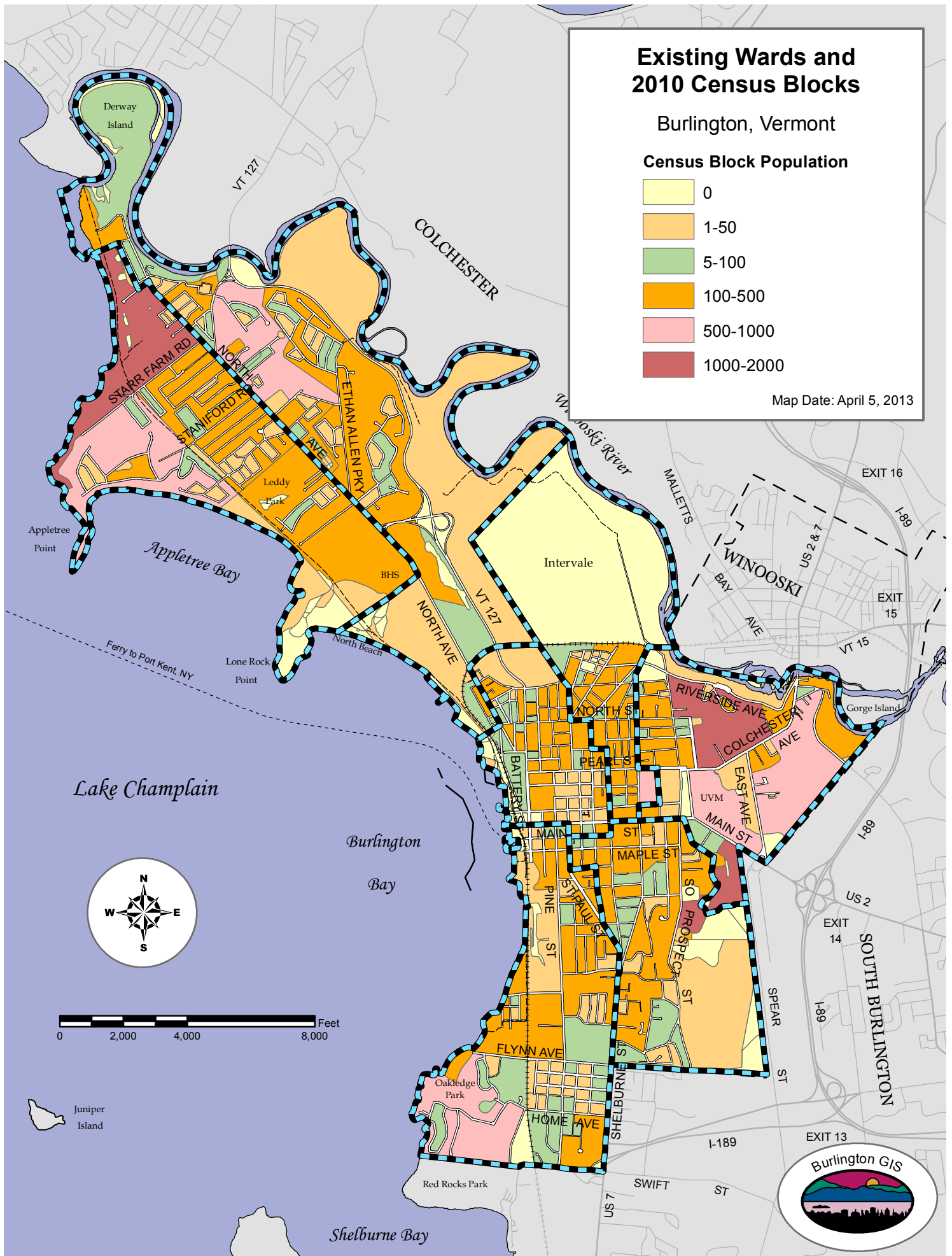
Existing Wards and 2010 Census Blocks

Burlington, Vermont

Census Block Population



Map Date: April 5, 2013



Existing Ward Population According the 2010 US Census

| Ward (1993) | Number of Councilors | Ward Population (P0030001) | Ward Population Per Councilor | Deviation from Ideal Per Councilor | Percent Deviation from Ideal Per Councilor |
|-----------------------------|----------------------|----------------------------|--------------------------------|------------------------------------|--|
| 1 | 2 | 7593 | 3797 | 767 | 25.3% |
| 2 | 2 | 6106 | 3053 | 23 | 0.8% |
| 3 | 2 | 6076 | 3038 | 8 | 0.3% |
| 4 | 2 | 5081 | 2541 | -489 | -16.1% |
| 5 | 2 | 5817 | 2909 | -121 | -4.0% |
| 6 | 2 | 6343 | 3172 | 142 | 4.7% |
| 7 | 2 | 5401 | 2701 | -329 | -10.9% |
| | | | | | |
| Total: | | 42417 | Overall Plan Deviation: | | 41.5% |
| Ideal Per Councilor: | | 3030 | | | |

| | |
|-------------------------------|--|
| DEFINITIONS: | |
| DISTRICT | A geographic area whose boundaries that define the constituency of an elected official. A District can include one of more elected legislators (Councilors). |
| PLAN | An electoral District configuration proposal. |
| IDEAL POPULATION | Number of people that should be in each of the town or city's electoral districts for exactly equal representation. This number is calculated by dividing the total city population by the total number of legislators (City Councilors), then multiplied by the number of legislators in each district. |
| DEVIATION | Amount or percentage by which a District's population differs from that District's Ideal Population. The percentage is the difference between actual and Ideal population, divided by the Ideal Population. The maximum Deviation for approximately equal representation is 10%. |
| OVERALL PLAN DEVIATION | The Overall Plan Deviation is the Deviation percentage point spread between the most and least populated Districts. The courts use this measure to determine the extent to which a Plan provides equal representation, defined as a maximum of 10% for equality. |

The only guidance for how to redistrict is in State Law pertaining to the State House and Senate districts:

Vermont Constitution Sec 73

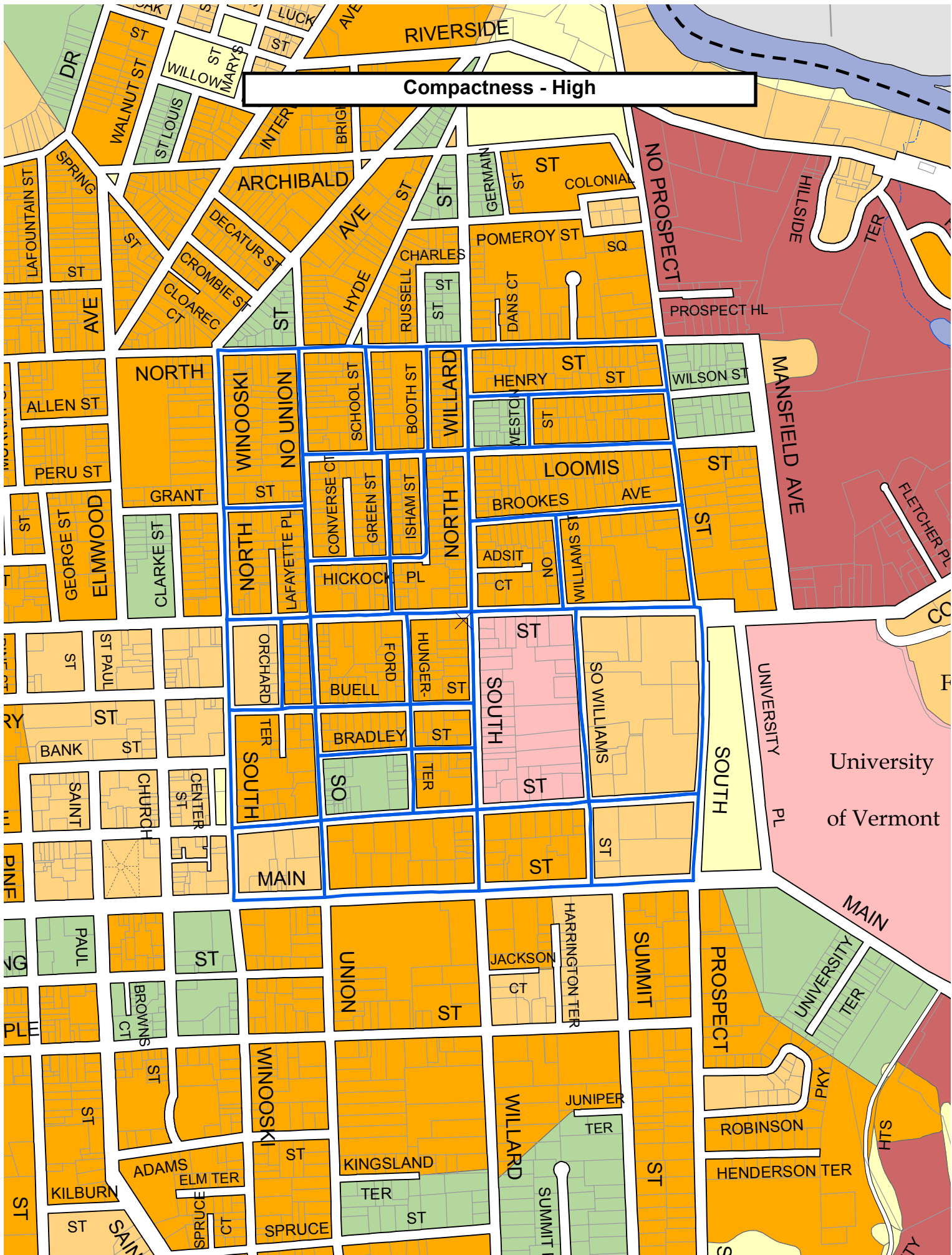
“At the biennial session following the taking of each decennial census under the authority of Congress, and at such other times as the General Assembly finds necessary, it shall revise the boundaries of the legislative districts and shall make a new apportionment of its membership in order **to maintain equality of representation among the respective districts as nearly as is practicable.**

VSA Title 17: Elections

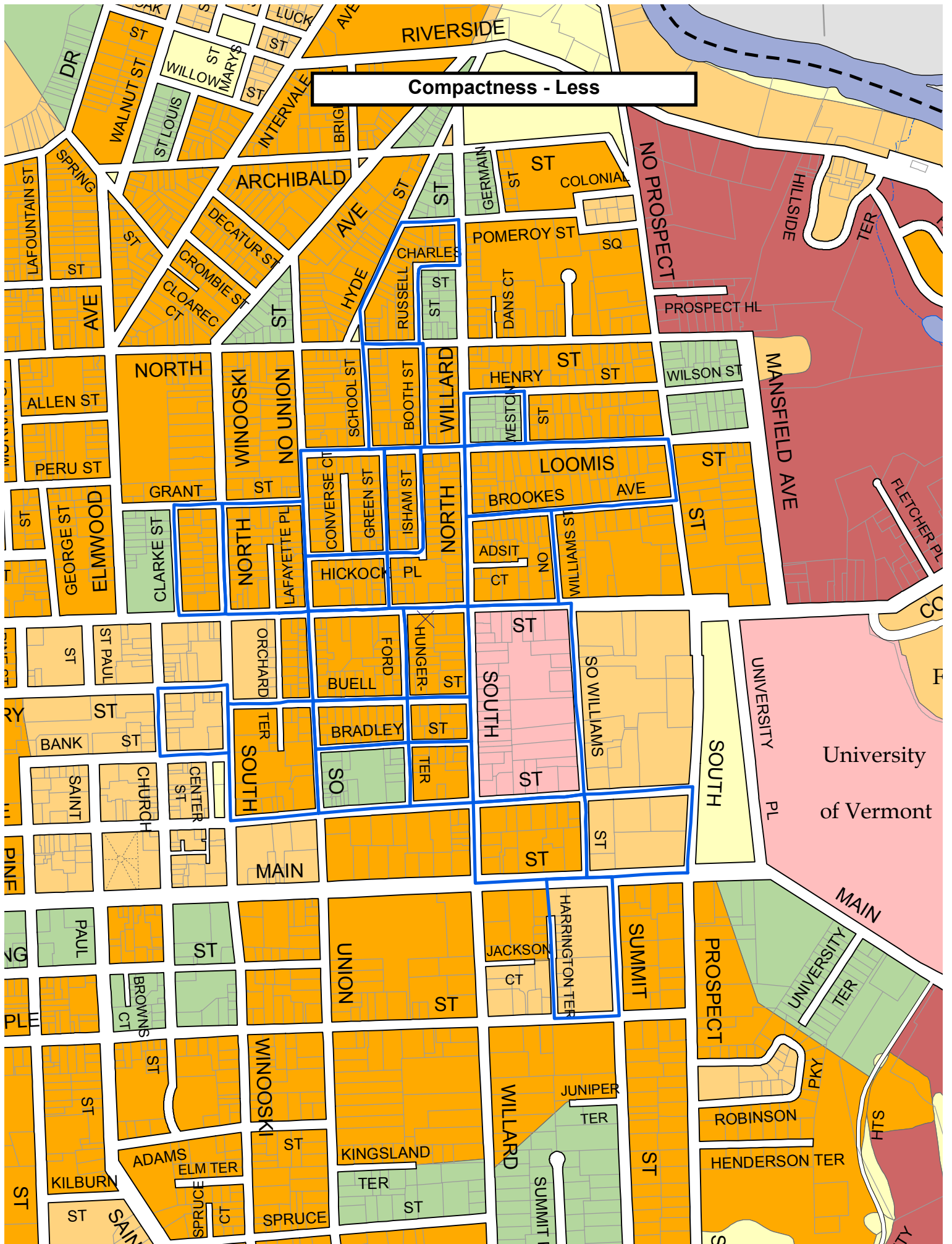
Sec 1903(b):

“The representative and senatorial districts shall be formed consistent with the following policies insofar as practicable:

- (1) preservation of existing political subdivision lines;**
- (2) recognition and maintenance of patterns of geography, social interaction, trade, political ties, and common interests;**
- (3) use of compact and contiguous territory.”**

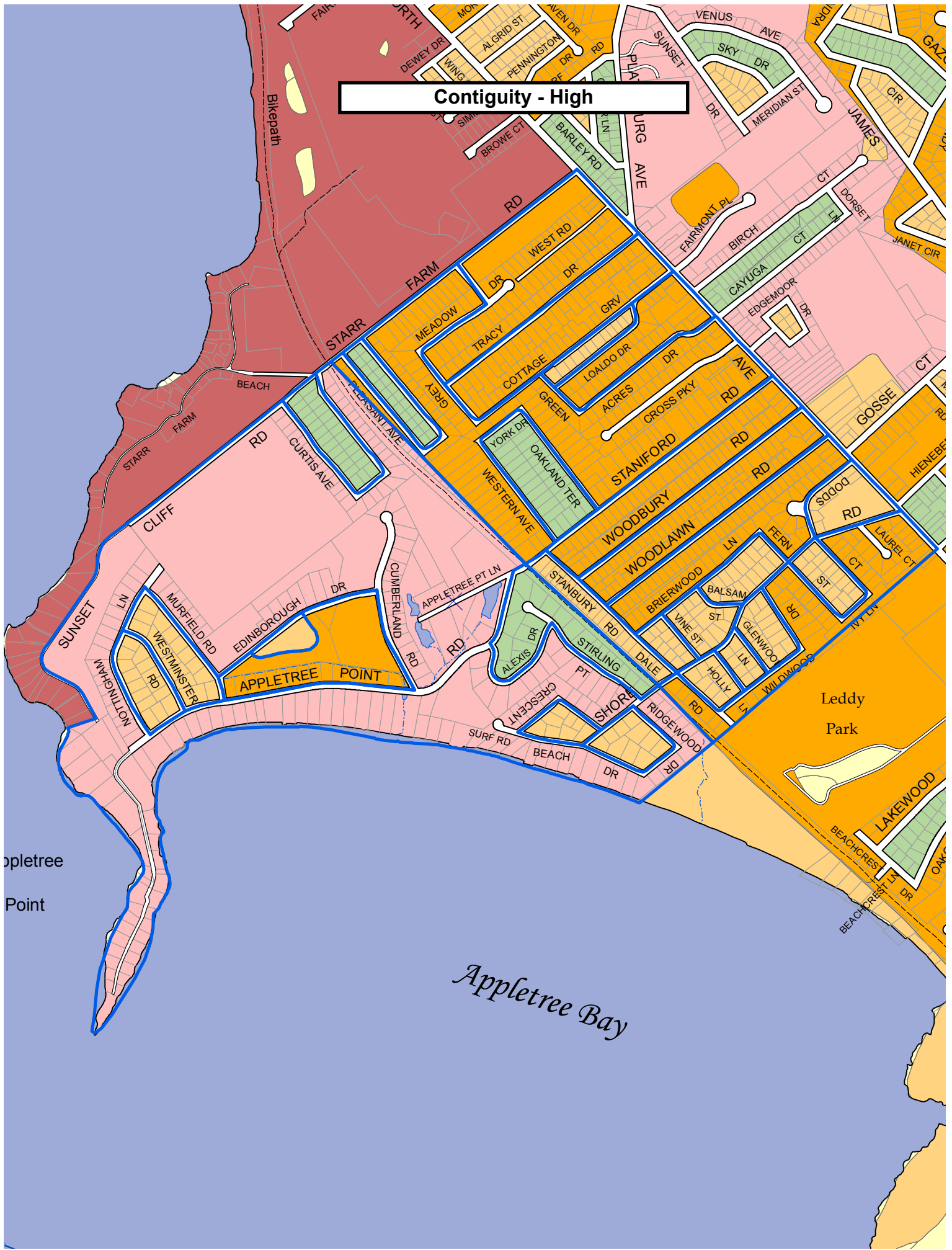


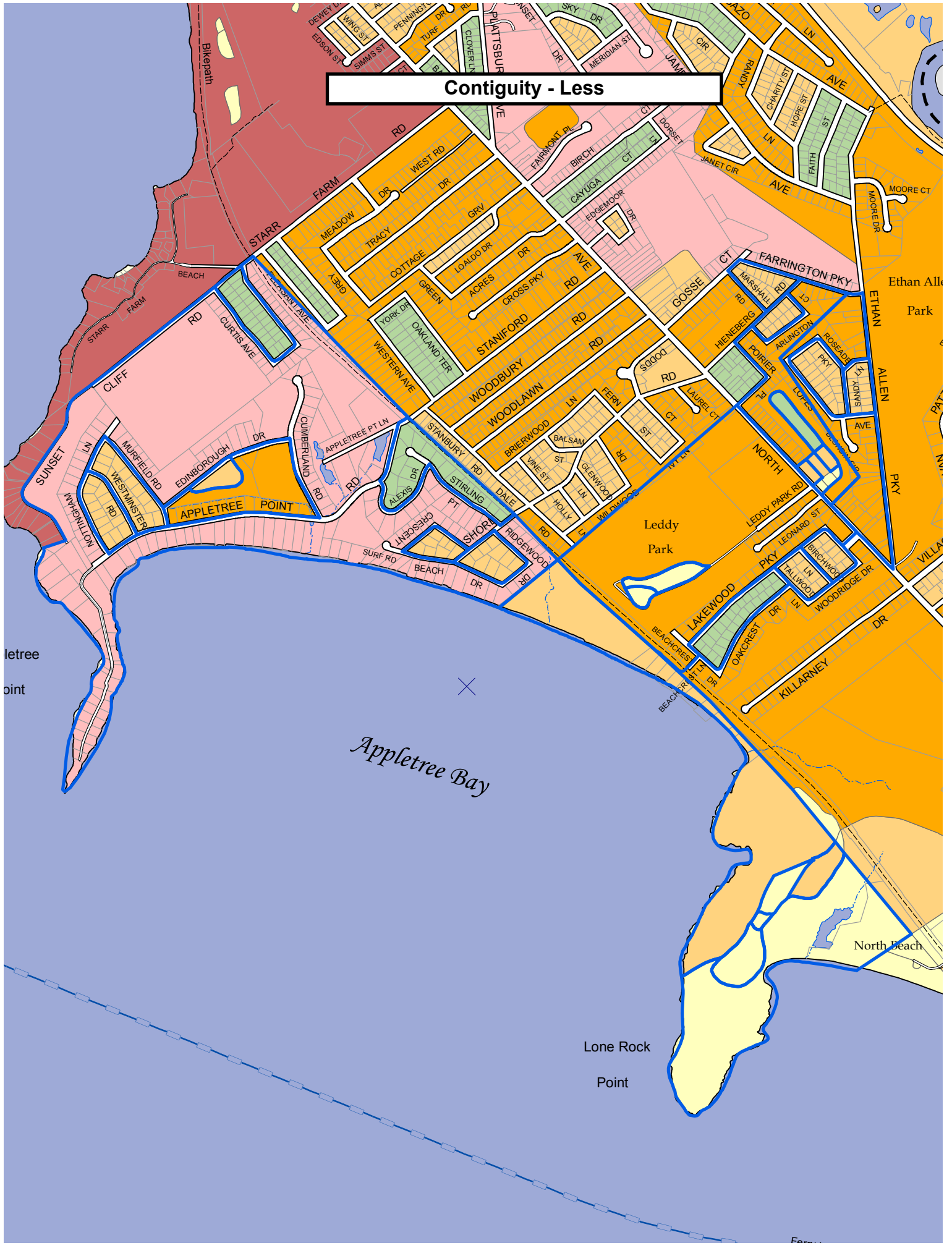
Compactness - High



Compactness - Less

Contiguity - High





Contiguity - Less

City Council Size and Representation

| Total Number of Councilors | Ideal Population Per Councilor | Maximum Deviation per Councilor |
|-----------------------------------|---------------------------------------|--|
| 10 | 4240 | 424 |
| 11 | 3855 | 386 |
| 12 | 3535 | 354 |
| 13 | 3260 | 326 |
| 14 | 3030 | 303 |
| 15 | 2830 | 283 |
| 16 | 2650 | 265 |

| | |
|--------------------------|--------|
| Total Population (2010): | 42,417 |
|--------------------------|--------|

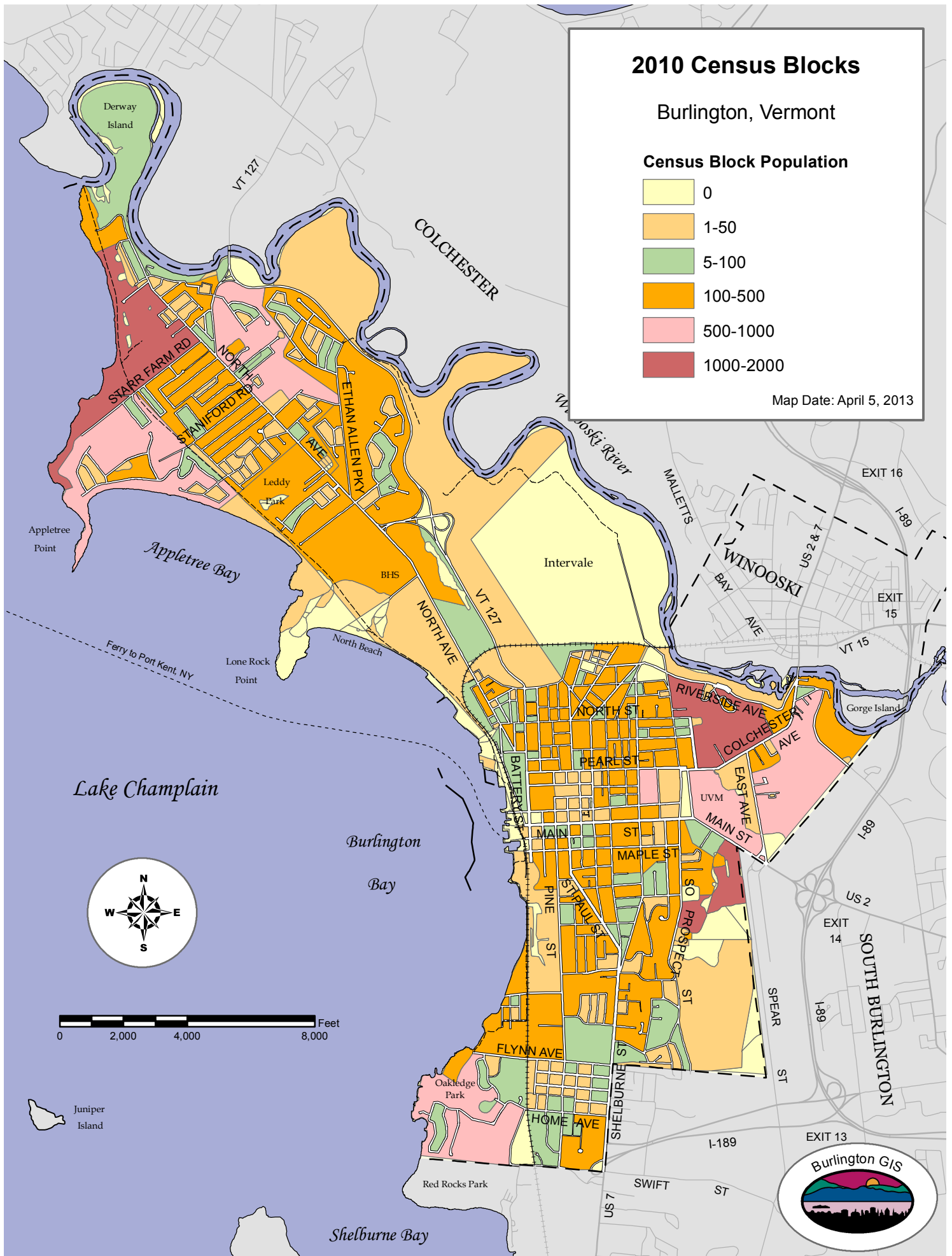
2010 Census Blocks

Burlington, Vermont

Census Block Population



Map Date: April 5, 2013



Census Blocks with 500+ People in Existing Wards

| BLOCK | POPULATION | PERCENT OF WARD IDEAL POPULATION | CURRENT WARD LOCATION | DESCRIPTION |
|-----------------------------------|-------------|-------------------------------------|--------------------------|--|
| 500070039003003 | 527 | 8.7% | Ward 1 | UVM Main Campus |
| 500070006001017 | 626 | 10.3% | Ward 1 | East of East Ave to Grove St |
| 500070006001006 | 1345 | 22.2% | Ward 1 | Riverside to Colchester Ave |
| 500070039003008 | 1980 | 32.7% | Ward 1 | UVM South of Main Campus |
| 500070006002009 | 604 | 10.0% | Ward 2 | Pearl/South Willard/College/South Williams block |
| 500070002003000 | 513 | 8.5% | Ward 4 | Appletree Point to Bikepath |
| 500070002001002 | 1263 | 20.8% | Ward 4 | Northgate/Starr Farm |
| 500070011002003 | 592 | 9.8% | Ward 5 | Austin Drive Condo Area |
| 500070039002007 | 1509 | 24.9% | Ward 6 | UVM Redstone Campus |
| 500070001001008 | 720 | 11.9% | Ward 7 | Plattsburg Ave South to Gosse Ct |
| | | | | |
| WARD IDEAL POPULATION: | 6060 | | | |
| | | | | |
| TOTALS: | 4478 | 73.9% | Ward 1 | |
| | 604 | 10.0% | Ward 2 | |
| | 0 | 0.0% | Ward 3 | |
| | 1776 | 29.3% | Ward 4 | |
| | 592 | 9.8% | Ward 5 | |
| | 1509 | 24.9% | Ward 6 | |
| | 720 | 11.9% | Ward 7 | |

Review of Redistricting Committee Work in 2012

The first step in redistricting is to determine the number of Councilors. The committee thought that 12-14 Councilors would be best.

The committee considered 4, 6, 7, and 8 wards plans. The committee preferred an equal number of councilors per ward. There was discussion of a mix of one and two Councilor wards. The committee did not favor at-large Councilors.

Summary of Redistricting Criteria discussed:

| CRITERIA | SPECIFICS | NOTES |
|--|--|--|
| NNE Ward(s) Discrete | NNE Ward(s) should not span into the ONE. | Patterns of geography, social interaction, political ties, common interests. |
| Keep Existing Geographic Areas Intact | NNE, ONE, Downtown, Hill Section, South End | Patterns of geography, social interaction, political ties, common interests. |
| Boundaries Follow Major Roads as Much as Possible | | Compactness, but can split social patterns |
| Academic Institutions in More Than One Ward | UVM Live/Learn and Redstone blocks in particular | Permanent residents tend to participate in governance more. |
| Ward Size for Citizen Communication and Campaigning | 4 ward configuration considered too big. | High Contiguity |
| Minimize Number of State District – Ward Combinations | Affects election cost and complexity. | Ward/State House ballot combinations: Currently 19. |
| Minimize Degree of Change from Current Wards | Existing wards have been in place for 20 years | |

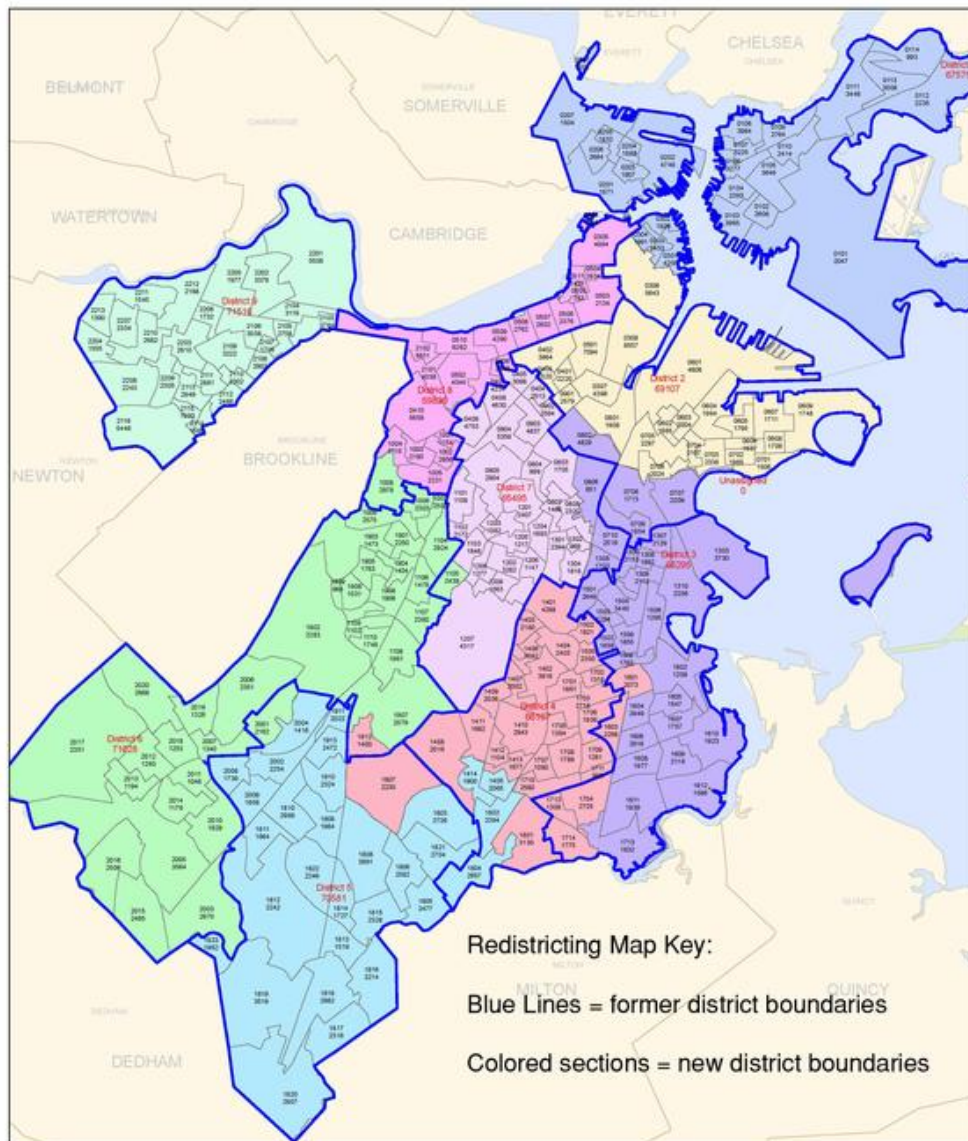
Boston Redistricting – Plan Adopted Oct 31, 2012



CHARLES YANCEY



BILL LINEHAN



City of Boston
City Council Approved Map 2012

0 1 2 3 4 Miles
November 2012

City of Boston
MAPS